



NORTHWEST INTERPRETIVE ASSOCIATION

**SUPPORTING
NORTHWEST PUBLIC LANDS
FOR MORE THAN 30 YEARS**

2005 ANNUAL REPORT



NWPUBLICLANDS.ORG



MOUNT ST. HELENS VIEWED FROM SPIRIT LAKE, COMPOSITED OF PRE-1980 & POST-1980 PHOTOGRAPHS
ORIGINAL IMAGES COURTESY USGS CASCADES VOLCANO OBSERVATORY.

Northwest Interpretive Association 2005 Annual Report

EDUCATING FOR THE FUTURE:
LINKING PEOPLE, NATURE, AND HISTORY
THROUGH INTERPRETATION

Northwest Interpretive Association promotes values that encourage the preservation and protection of our cultural and natural heritage by: providing effective education, promoting positive partnerships, enhancing public experiences, creating teamwork, and maintaining professional operations.

NWIA STAFF AND CONTACTS

PRINCIPAL OFFICE AND INQUIRIES

NORTHWEST INTERPRETIVE ASSOCIATION
164 SOUTH JACKSON STREET
SEATTLE, WASHINGTON 98104-2853
WWW.NWPUBLICLANDS.ORG

CERTIFIED PUBLIC ACCOUNTANTS

BRANCH, RICHARDS & CO. P.S.
155 NE 100TH STREET, SUITE 410
SEATTLE, WASHINGTON 98125

BOARD OF DIRECTORS

Wayne Brown: Chair • Jim Pollock: Vice Chair • Mark Lester: Secretary-Treasurer • Angela Owen • Bill Locke • Jeannette Holman • John Osaki • Lorraine Denning • Mick Foy • Neil Masser • Robert Reynolds

SEATTLE SUPPORT STAFF

Jim Adams: Executive Director • David Lindau: Administrative Director • John Zuber: Financial Manager • Bonnie Barrett: Purchasing Manager • Ben Nechanicky: Technology Manager • Heidi Pfeifer: Accounts Payable Administrator • Suzanne Greninger: Administrative Assistant • Diane Littau: Merchandise Manager

NWIA SITE MANAGERS

Margaret Baker: Olympic National Park • Shirley Barney: Hiram M. Chittenden Locks • Mark Forbes: Outdoor Recreation Information Center (ORIC) • Debbie Peterson: Willamette National Forest • Corrie Hausman: Fort Vancouver National Historic Site • Lori Herr: Northern Washington Region • Rochelle Holz: Olympic National Forest • Lana Kidner: Bonneville Lock and Dam & Columbia River Gorge NSA • Sue Kirk: Gifford Pinchot National Forest & Mount St. Helens Visitor Center • Colleen Mathisen: Lolo Pass Visitor Center • Sue May: Siuslaw National Forest • Kathy Pratt: Deschutes National Forest • David Ranck: Mount Rainier National Park • Michelle Richardson: Mt. Hood National Forest • Mary Lou Tiede: Nez Perce National Historical Park • Heidi Wilson: Wallowa-Whitman National Forest

CONTRIBUTIONS

Northwest Interpretive Association welcomes contributions from individuals and organizations with an interest in fostering greater knowledge, understanding, and appreciation of the natural and historical heritage of the Northwest. The Association is classified as a publicly supported tax-exempt organization under Section 501(c)(3) of the Internal Revenue Code. Tax-deductible contributions may be made under section 170 of the Code.



AERIAL VIEW OF MOUNT ST. HELENS FROM THE WEST, JUNE 8, 2005. THE FLANK OF MOUNT ADAMS IS JUST VISIBLE ON THE LEFT. PHOTO COURTESY USGS CASCADES VOLCANO OBSERVATORY.

THE SERIES OF IMAGES OF MOUNT ST. HELENS APPEARING FROM PAGES VI THROUGH XXIII AND THROUGHOUT THESE PAGES IN THE NORTHWEST INTERPRETIVE ASSOCIATION 2005 ANNUAL REPORT HIGHLIGHT EVENTS AND ACTIVITIES THAT OCCURRED AT MOUNT ST. HELENS FROM FALL 2004 THROUGH FALL 2005 DURING A HIGHLY ACTIVE PERIOD ON THE MOUNTAIN AFTER MANY YEARS OF RELATIVELY QUIET ACTIVITY.

ALL IMAGES CONTAINED IN THIS PUBLICATION, UNLESS OTHERWISE CREDITED, ARE USED COURTESY OF THE UNITED STATES GEOLOGICAL SURVEY CASCADE VOLCANO OBSERVATORY AND CAN BE FOUND ON THE USGS CVO WEB SITE AT:

[HTTP://VULCAN.WR.USGS.GOV/VOLCANOES/MSH/](http://vulcan.wr.usgs.gov/volcanoes/msh/)

CONTENTS

NWIA STAFF AND CONTACTS.....	FACING PAGE
LETTER FROM THE BOARD CHAIR.....	2
LETTER FROM THE EXECUTIVE DIRECTOR.....	3
PROJECT HIGHLIGHTS.....	6
STATEMENT OF FINANCIAL POSITION.....	24
PARTNER CONTACTS.....	26

LETTER FROM THE BOARD CHAIR

The year of 2005 was a “good news/bad news” kind of year. We were delighted to see both sales and aid to our partner agencies set a new record. At the same time, it became clear that the context in which NWIA operates is filled with a great deal of uncertainty. Public lands are underfunded resulting in visitor centers being closed or privatized. The high price of gas limits travel options for some tourists and Mount St. Helens is no longer erupting. Reduced crowds at the visitor centers we operate means loss of revenue, which means reduced ability to provide interpretive aid to our partner agencies.

What to do? Fortunately neither the NWIA executive staff nor Board of Directors has been passive in response to this uncertainty. We are absolutely committed to our core mission of providing interpretive aid to our partner agencies and have taken steps to diversify the ways in which we deliver on our core mission. Our bylaws were revised to give us more flexibility in developing aid. When Mount St. Helens reawakened, the online store was initiated and subsequently refined, opening the interpretive resources of NWIA to a larger audience. A business plan is in place and gives the organization an ongoing analytical tool to establish short- and long-term goals, and to track our progress towards them. Perhaps most important is the commitment of both the NWIA executive staff and Board to face the challenges squarely and see NWIA through to a new level of relevance and support for our partner agencies.

I would agree with Aldo Leopold who, years ago, pointed out that wilderness provides the building blocks of civilization. The business of helping people understand and appreciate their public lands has never been more important, particularly in the face of a minimalist public policy when it comes to this country’s natural heritage, as well as a society that is increasingly urbanized. NWIA will creatively continue to find ways to extend public awareness and appreciation for our natural heritage revealed in our public lands.

Wayne Brown, Chair

Board of Directors

Northwest Interpretive Association

LETTER FROM THE EXECUTIVE DIRECTOR

2005 was a “twin peaks of sales” year, one of them a real mountain. Mount St. Helens celebrated the 25th anniversary of its big eruption with a steady stream of small eruptions that brought volcano fans from all over the world to our doorstep. The other peak is more symbolic: 2005 was also the 200th anniversary of Lewis and Clark’s expedition to our neck of the woods. These two anniversary events drove sales to record levels for NWIA and created record levels of aid for our partners. Sales in the Gifford Pinchot National Forest were 12% above 2004. Sales at the Lolo Pass Visitor Center (Clearwater NF) where Lewis and Clark went over the Rockies were up 25% from 2004. As an organization NWIA sales went from \$2,928,018 to \$3,080,201 or 5.2% from 2004.

All this economic activity made possible many projects, which NWIA funded and facilitated. A few of my favorites from 2005 were co-producing “A Taste of Lewis and Clark”, an event held at both Hiram M. Chittenden Locks and Bonneville Lock and Dam, and the grand opening of the new Thomas Condon Paleontology Center at John Day Fossil Beds National Monument. At John Day Fossil Beds, NWIA commissioned a beautiful landscape painting of the monument. We then used this painting to design the grand opening poster, which was offered to the public with a suggested donation of \$5 while the original painting was auctioned off to benefit donations. The end result was a net gain of \$1048 for John Day’s donation account. NWIA and our partners continue to find more new and creative ways to collect donations. Donation funds are especially useful to our work because of the flexibility in how we can use these funds for educational projects. In 2005 we installed two penny press machines at both Bonneville Dam and Hiram M. Chittenden Locks. These machines are very popular with visitors looking for a memento of their visit. At 50 cents a pressed penny, we’ve found a steady stream of new dollars for our Bonneville and Hiram M. Chittenden Locks donation accounts.

2005 also saw the rebirth of the Mount St. Helens Institute. NWIA participated and supported the Institute along with the National Forest Foundation and the Gifford Pinchot NF. Specifically, NWIA dedicated \$30,000 of aid to support two positions and then put those two positions on our payroll system so that the new Institute would not need to create their own. The hard work of all the partners in the project has borne fruit in the summer of 2006 with the Mount St. Helens Institute offering a full array of classes and programs while managing a whole new crop of volunteer interpreters.



NEWS MEDIA GATHERING AT COLDWATER RIDGE, OCTOBER 3, 2004. PHOTO COURTESY USGS CASCADES VOLCANO OBSERVATORY.

The year of 2005 saw more stress on the amount of payroll dollars our partners are able to devote to visitor services and interpretation. Once again NWIA was tasked with helping to fill that gap with ever more creative solutions. In 2005 NWIA was able to fund \$105,929 worth of salary dollars above and beyond our budgeted payroll. This represented over 9,000 hours of direct face-to-face visitor services. Some of these positions were funded outside NWIA by grants and some were funded direct from aid budgets. By far the largest amount of extra payroll dollars came from our income from fee and pass sales. By 2007 we will all be living in a new Fee Demonstration world. The National Park Pass, the Golden Eagle Pass, and the add-on hologram will be replaced by the America the Beautiful Pass. For the general public this will make visiting federal public lands much less complicated. For NWIA the net result will most likely be a loss of some of the extra income we use to subsidize extra staff out in the field, which in turn may make a difference in how many hours some ranger stations and visitor centers may be open to the public. This is a challenge NWIA and all our partners are going to have to meet in the coming years.



AERIAL VIEW OF MOUNT ST. HELENS AND ERUPTION PLUME ON OCTOBER 5, 2004. PHOTO COURTESY USGS CASCADES VOLCANO OBSERVATORY.

In closing I want to thank Steve Elmore, our outgoing board chair, for his tireless efforts to put our legal house in order. Our corporate documents, bylaws, and other organizing materials were woefully out of date. Steve made it his mission to hammer these documents into shape and put us back on a secure legal footing. Steve, we thank you from the bottom of our legal hearts.

Thank you all for a great year!

Jim Adams,
Executive Director
Northwest Interpretive Association



LAUNCHING THE NWIA ONLINE STORE

In the summer of 2005, NWIA launched its own online store featuring maps, books, trail guides, and other items for sale which interpret the history, beauty, and ecological diversity of the Pacific Northwest. The web site provides NWIA's partners with their own online store links, affording them the opportunity to include many of the products sold in the field on the web site, as well as an opportunity for web site visitors to make donations, enroll in the membership program, and sign up for email newsletters. This is the first web site of its kind for NWIA, and while many aspects of these features are still being examined and finessed, the online store has proven to be a substantial source of income and a significant move in a new direction for the organization and its partners.

You can visit our web site at: WWW.NWPUBLICLANDS.ORG

PROJECT HIGHLIGHTS FROM THE FIELD

Every year NWIA provides funding for its partners on numerous projects which encourage the cultivation of public awareness and appreciation of the history, ecology, and beauty of public lands in the Northwest. This support includes paying the expenses of exhibits, printed publications, educational and interpretive programs, guest speakers, special public events and performances, and much more. NWIA would like to thank its agency partner staff and volunteers for their efforts and hard work in maintaining a meaningful and positive atmosphere in the field for visitors. The following pages of this report include some of the projects NWIA helped finance for its partners in the year of 2005.



USDA FOREST SERVICE

DESCHUTES NATIONAL FOREST

Conservation Education Support

NWIA provided \$10,000 of critical funding in support of conservation education programs at Newberry National Volcanic Monument. These programs reached 5,250 students in three curriculum disciplines: physical geology, ecology, and heritage conservation. The Forest Service receives many positive comments about these programs, and NWIA's essential support role grows evermore crucial with each passing year.

Lava Lands 30th Anniversary Celebration

A three-day celebration supported and cosponsored by NWIA included the 30th Anniversary of Lava Lands Visitor Center, the Centennial for both the Forest Service and the City of Bend, and the 150th anniversary of the Middle Oregon Treaty between the Warm Springs Tribes and the U.S. government. This treaty ceded 10 million acres to the U.S. to make room for incoming settlers. NWIA funded the performance of a Native American flute player and provided refreshments for the event. The celebration also included the opening of two art exhibits – the tribal exhibit on the 150 year observance of the treaty (which was on loan from the Museum at Warm Springs), and a photographic exhibit commemorating the Forest Service and City of Bend centennials.

GIFFORD PINCHOT NATIONAL FOREST

Mount St. Helens Supplemental Tear (Vicinity) Map

NWIA funded the printing of a supplemental tear map of the Mount St. Helens vicinity. This 11 x 17 inch map was used at information desks to help visitors better understand their recreational options and to help them identify destination routes. By being a source of key recreational sites on the forest, this map provided a means for visitors to easily navigate and locate these areas.



Volcano Review

NWIA funded the printing of the *Volcano Review*, a small newspaper used at all of the information desks and also the local Chamber of Commerce to inform visitors of recreational opportunities in the area. It has pictures, text, and driving times for all the major destinations and cities in southwest Washington.

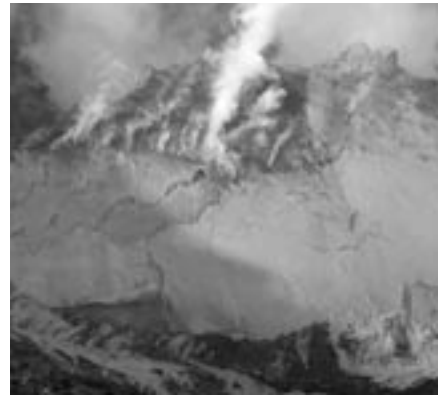
Mount St. Helens Institute

Along with the National Forest Foundation, NWIA supported the Mount St. Helens Institute's development in 2005 by helping to transform the Institute into a nonprofit organization capable of supporting the mission of the Mount St. Helens National Volcanic Monument. NWIA contributed funds from donations to seed fundraising efforts for the Institute, helped finance the design of a card featuring information about the Institute and how the public can contribute to the Institute's work, financed the web site development and hosting for the Institute, and provided funding to support two positions at the Institute. NWIA's participation in the development of the Mount St. Helens Institute was by far the Association's main contribution for 2005.

LOLO NATIONAL FOREST

Black Bear Skull

Branch budget dollars were used to cover the cost for a taxidermist to clean and whiten a black bear skull, which was installed at Seeley Lake Ranger District. The black bear skull proves to be a great interpretive and educational item for the public, as well as a terrific addition to the full-body black bear mount previously purchased and installed for the district.



MT. BAKER-SNOQUALMIE NATIONAL FOREST

Winter Activity Guide

NWIA covered the expense for printing the *Mount Baker-Snoqualmie Winter Activity Guide*, a free newspaper and the only winter activity information guide for the North Cascades and the Mount Baker Ranger District. This guide concentrates on the northernmost areas of Skagit and Whatcom counties in Washington State and is targeted towards all visitors to the Mt. Baker-Snoqualmie National Forest and North Cascades Region.

Heather Meadows Native Plant Brochure

NWIA funded the printing of the *Heather Meadows Native Plant Brochure*. This fall color brochure on native subalpine plants in the Heather Meadows area of the Mount Baker Ranger District supports educational efforts and interpretation aimed at subalpine restoration efforts in the Mt. Baker-Snoqualmie National Forest area. This brochure is targeted towards local residents visiting Mt. Baker-Snoqualmie National Forest, as well as national and international travelers.

Outdoor Information Project at Southwest Headquarters

NWIA financed the materials for construction of a backcountry register box, brochure holder, information panels, and the weatherproofing of the Outdoor Information Self-Service Center at the southwest headquarters for North Cascades National Park and Mount Baker Ranger District.

OLYMPIC NATIONAL FOREST

New Displays for Quinault

NWIA purchased new displays for the visitor center at Quinault. Adding this new space has enabled the Forest Service to present more information in plain view for the visitors.



Staffing for Visitor Centers

The biggest asset for the visitor centers at Quinalt, Quilcene, and Olympia is the support provided through seasonal frontline staffing. The Forest Service has faced deep cuts in personnel, creating more workload on remaining staff. NWIA has provided staff to keep the sales areas operating at a sufficient level.

SHASTA-TRINITY NATIONAL FOREST

Plexiglass Replacement on Visitor Information Kiosk

NWIA financed the replacement of plexiglass on the after hours visitor information kiosk for the Mount Shasta Ranger Station. The new windows consisted of tempered glass and were waterproofed as well as sealed. This prevented shorting of the lighting system by the sprinklers, as well as displays from becoming damaged and unreadable.

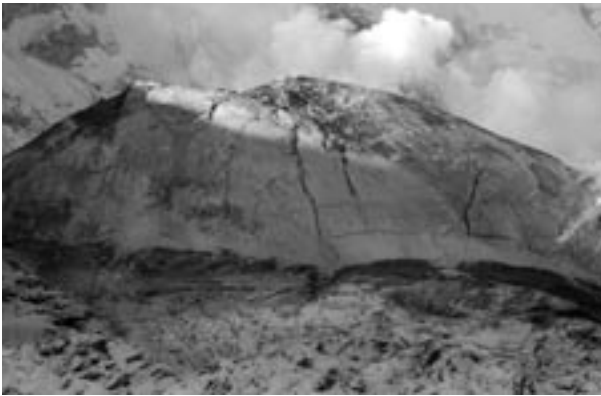
Fish Day

NWIA purchased aquatic education materials for Fish Day at Weaverville Ranger District, which took place one day in the classroom and one day at Trinity Lake in the summer of 2005. Games and prizes were also covered by NWIA as the students learned from a biologist about the life cycle of fish.

SISKIYOU NATIONAL FOREST

The Dynamic Oregon Coast Brochure

NWIA supported the design and printing of *The Dynamic Oregon Coast*, a brochure that highlights geologic features on the Oregon Coast. The brochure is a free publication with information on the Oregon coastline, the formation of sea stacks, arches, and wave-cut platforms. 5000 brochures were printed for distribution to the public.



UMPQUA NATIONAL FOREST

Doty and Coyote: Stories from the Native West

NWIA funded a program presentation by Thomas Doty to Rural Outdoor School in May 2005. Thomas Doty's stories of the native west are a blend of traditional myths, original stories, monologues, and poems—all of which comes alive with gestures, expressions, voices, and movements.

Howling Acres Wolf Sanctuary

Every year, NWIA funds interpretive services for the Diamond Lake Campfire Program. For 2005, Howling Acres Wolf Sanctuary provided slide shows and presentations to the public. Howling Acres Wolf Sanctuary is a nonprofit corporation dedicated to the preservation of wolves.

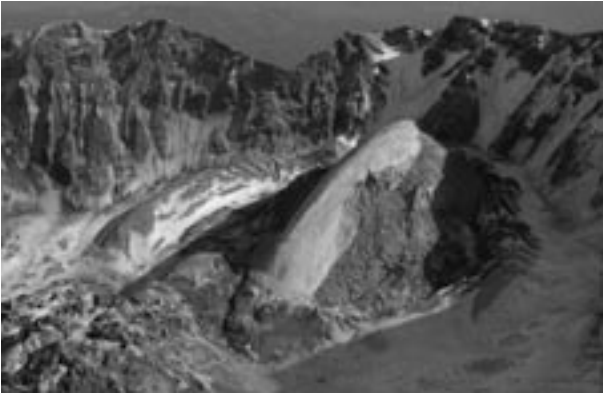
North Umpqua Trail Brochure

NWIA helped support the reprinting of the *North Umpqua Trail* brochure for Umpqua National Forest. The brochure is a cooperative project developed by the Roseburg District, Bureau of Land Management, and the Umpqua National Forest, and features information on several hiking trails including their distances and difficulty levels, as well as trail safety and courtesy tips.

WALLOWA-WHITMAN NATIONAL FOREST

DVD Conversion

NWIA funded the conversion of a slide show of Eagle Cap Wilderness to DVD in September 2005. All 35 mm slides were scanned and then edited and enhanced while marginal photos were replaced. The cassette tape narration was also digitized. This DVD conversion is for the purpose of public viewing at the Wallowa Mountains Visitor Center. The revisions to the show also allowed the potential for creating a saleable merchandise item.



NATIONAL PARK SERVICE

FORT VANCOUVER NATIONAL HISTORIC SITE

Video Camera and Peripherals

NWIA purchased a new video camera for taping volunteers in action, documenting special events and other unique programs, and recording training sessions for wider dissemination. It has also been used to help staff train and certify in modules of the Interpretive Development Program (IDP).

Purchasing Materials for the Library

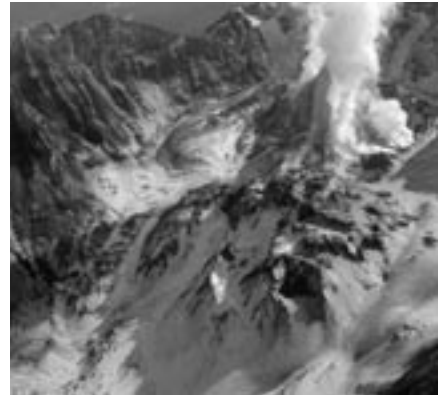
In 2005, NWIA was able to purchase a number of fantastic titles for the park's new Archives and Research Collection (ARC), including many that were just about to go out of print.

Providing Support for Volunteers

Every year, NWIA funds are used to feed the volunteers who make the Fort's special events possible. NWIA also funds the volunteer awards program, providing everything from door prizes at special events to merchandise awards for long-term service.

Staff Development

With training funds limited, NWIA funds were used to aid staff development by sending two employees to a highly touted Franklin-Covey organizational skills workshop. Fort Vancouver was also able to obtain copies of highly sought-after research articles and images from repositories, such as the Hawaiian Historical Society, for helping staff program development.



JOHN DAY FOSSIL BEDS NATIONAL MONUMENT

Grand Opening of the Thomas Condon Paleontology Center

NWIA funded the string quartet music performance of the Cascade Chamber Players at the dedication ceremony of this event, as well as an original oil painting titled *Sheep Rock* by artist Margaret Willis for the silent auction at the opening. This event also gave NWIA the opportunity to create a poster of the *Sheep Rock* painting. The posters were used to produce suggested donations from visitors. NWIA ended up making back the cost of the posters produced, plus a few hundred more dollars. In addition, NWIA funded the creation of a John Day Fossil Beds National Monument T-shirt for the occasion of the grand opening of the new museum. The T-shirt has been a popular addition to the sales area.

KLONDIKE GOLD RUSH NATIONAL HISTORICAL PARK

Opening of a New Store

NWIA opened a new store at the Klondike Gold Rush National Historical Park in 2005. The store has been designed to represent a period gold rush era store, offering a variety of reproduction merchandise from the period, as well as traditional books. Expenses covered by NWIA included fixture construction and installation of bookcases, wood-edged countertops, base cabinets, wall shelving, as well as a cash counter with accommodations for a computer terminal.

LAKE ROOSEVELT NATIONAL RECREATION AREA

Books for Research Libraries

NWIA funds were used to purchase books for the park's three research libraries that are used to create interpretive programs.



CD Player

A CD player was purchased to play period music in the visitor center, which is in the historic Guard House at Fort Spokane.

MOUNT RAINIER NATIONAL PARK

Support for Teachers

NWIA funding in the amount of \$1300 supported three teachers who developed curriculum for the education program at Mount Rainier. The teachers attended a pilot Mountain Geography and Cultures teachers workshop hosted jointly by the National Park Service and The Mountain Institute. The teachers then served as advisors to adapt curriculum to Mount Rainier for use in area schools. The project helps maintain effective relationships with the education community and will ultimately allow students to learn about ecosystems and human history in the Pacific Northwest.

The Tahoma News

NWIA also provided funding in excess of \$8500 for printing three editions of *The Tahoma News*, the official newspaper for Mount Rainier National Park. The newspaper provided critical trip planning, safety, and orientation information to virtually all of the park's 1.8 million visitors in 2005. This free newspaper, written and designed by NPS staff, is distributed at all park entrance stations, visitor centers, and ranger stations and is also posted on the park's web site. Without the support of NWIA this publication would not be possible.

NEZ PERCE NATIONAL HISTORICAL PARK

Workshop for Teachers! "Teaching with Museum Objects on the Web"

During the week of June 13-17, 2005, over 200 museum objects from the collection of Nez Perce National Historical Park were professionally photographed as part of a virtual



museum project that will be posted on the park's web site. This was funded out of the National Park Service Washington Office. During the week of June 20-23, the park invited 15 teachers from around the area as part of a workshop to create lesson plans for the web using the photographed museum objects. These lessons will be posted on the web. They will serve teachers and students throughout the country as they learn about Nez Perce history and culture. NWIA provided snacks, lunch, and some of the supplies for the workshop.

Funding for the Nez Perce National Historical Park's Partnership Newsletter

The lead story in the newsletter was the park's participation in the Lewis and Clark Expedition's Bicentennial Commemoration in Kamiah, Idaho. The activities included the Corps of Discovery II which consisted of interpretive exhibits, and the Tent of Many Voices, a large venue that presented programs to school children and to the general public every day for two weeks. Supplies for the educational programs in Kamiah were purchased by NWIA (beads for a memory string and stamps for a Jefferson peace medal stamp activity).

Wolves: Legend, Myth, and Fact

NWIA supported *Wolves: Legend, Myth, and Fact*, a wolf education program series which featured several guest speakers from the Nez Perce Tribe, the Wolf Education and Research Center, and the Wolf Recovery Foundation. The program took place in January 2005 and was free and open to the public.

NORTH CASCADES NATIONAL PARK COMPLEX

Dedication of the North Cascades Environmental Learning Center

NWIA supported the National Park Service's involvement in the dedication of the North Cascades Environmental Learning Center in October 2005 in the Ross Lake National



Recreation Area. The NPS Director and various other dignitaries participated. The North Cascades Environmental Learning Center represents a very large step up in the capacity which North Cascades National Park has for providing education. Educational programs which this new center supports focus on the North Cascades ecosystem, which includes a number of national forests served by NWIA. The dedication was an important opportunity to increase the public's awareness of this new facility and what it offers.

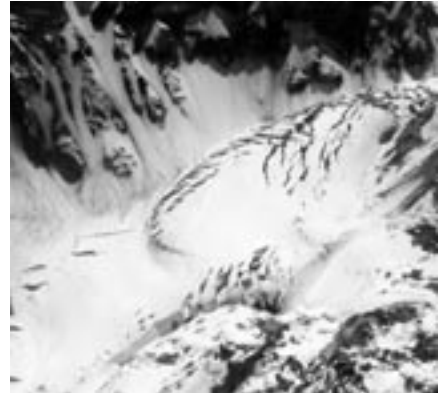
Storming the Sound

NWIA funded the exhibit space for "Storming the Sound," an annual gathering of environmental educators organized by People for Puget Sound and cosponsored by the National Park Service and other partners. The workshop is designed for K-12 teachers, private/public/home school educators seeking environmental education resources, students interested in pursuing a career in environmental education, or organizations and community groups who have environmental education resources to share. This one-day workshop seeks to bring together residents and programs in the North Sound counties of Jefferson, Clallam, San Juan Island, Snohomish, Skagit, and Whatcom.

OLYMPIC NATIONAL PARK

Olympic WPA Poster

Ranger Doug Enterprises worked closely with Olympic National Park and NWIA to create the newest in a series of posters designed to replicate posters created by the Works Progress Administration (WPA). Between 1935 and 1943 the WPA's Federal Art Project printed over two million posters in 35,000 different designs to stir the public's imagination for education, theater, health, safety, and travel. The beautiful poster for Olympic National Park depicts a subalpine meadow with a dramatic backdrop of the Olympic Mountains.



“Perspectives” Program Series

The popular community lecture series, “Perspectives”, continued this year at the Olympic National Park Visitor Center. The series explores the diversity of natural and cultural resources and research at Olympic National Park and related areas. Topics this year included pioneer life on the Washington Coast, spotted owls, national parks of eastern Africa, fire in Olympic’s Wilderness, and Pacific Coast intertidal ecology.

Education Programs

NWIA expanded its support of park education programs by helping staff to provide park visitors with information and orientation services and education programs at the park’s main visitor center.

Park Newspapers Funded by NWIA

Two editions of the park newspaper, *Olympic Bugler*, provided park visitors with information to plan their visit, to attend interpretive programs, and to better understand some of the current research being conducted at the park. The *Bugler* also included safety information related to wildlife encounters and feeding wildlife, proper food storage, hypothermia, winter driving, and avalanche conditions. NWIA funded the printing of both newspapers.

SAN JUAN ISLAND NATIONAL HISTORICAL PARK

The People of the Cedar

NWIA funded the honorarium for Richard Vanderway, education coordinator for Bellingham’s Whatcom Museum, who made his seventh annual visit to the park for his presentation, *The People of the Cedar*. This presentation, which took place at the English Camp barracks, included a stunning array of objects which provided a glimpse into Northwest Coast Indian culture.



The Birds of American Camp

San Juan Island bird expert and former National Park Ranger Barbara Jensen presented a colorful 90-minute walk through American Camp's prairies. The program, for beginning as well as veteran birders, provided startling insights into the park's rich flora and fauna. NWIA funded the honorarium for this intriguing guided walk.

A Weaving Legacy

Cowlitz Nation weaver Judy Bridges and Fort Nisqually interpreter and storyteller Karen Haas provided a fun afternoon of weaving with all-natural fibers, including wild reeds at English Camp parade ground. NWIA provided the honorarium for Bridges, who is a direct descendent of Hudson's Bay Company pioneers.

Ancient Visitors: Tracing the Prehistory of San Juan Island through Archaeology

NWIA funded the honorarium for University of Washington archaeologist, Dr. Julie Stein, who traced ancient habitation of San Juan Island in her guided walk on the American Camp prairie in June 2005.

Northwest Pioneer Folkways Demonstrations

Janet Oakley, education coordinator for the Skagit County Historical Museum in LaConner, demonstrated pioneer folkways from butter churning to Dutch oven baking and other tasks essential to the daily lives of pioneers in the Pacific Northwest at English Camp. NWIA funded the honorarium.

Life and Times of General George Pickett

Park Ranger Mike Vouri and folk musician Michael Cohen joined with the San Juan Community Theatre in presenting an evening of drama and song as George Pickett came back to life to talk about his days on the frontier and Civil War battlefields. NWIA funded the taping and preparation of the theater presentation into DVD.



Encampment 2005

NWIA supported Encampment 2005, where park staff, volunteers, and re-enactors from throughout the region gathered to re-create life on San Juan Island in the mid-19th century. Encampment 2005 included camp life, blacksmithing, woodworking, drilling, and cookery. The highlight of the weekend was Saturday's "Candlelight Ball," an evening of dancing and refreshments from 7 to 10 p.m.

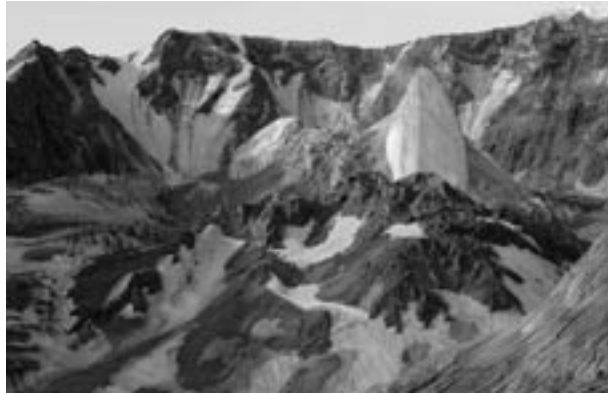
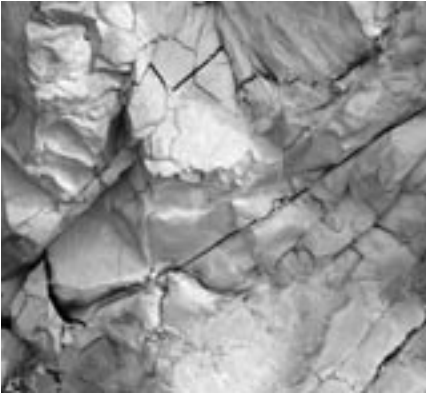
WHITMAN MISSION NATIONAL HISTORIC SITE

Display Case for Exhibits

Whitman Mission houses over 8,000 artifacts. NWIA funding provided a small display case to house temporary, rotating exhibits. Curatorial and interpretive staff worked together to research and create displays featuring artifacts from the park's collection. Some of the displays tied into the park's special weekend events. Topics included archaeology at the park, blacksmithing, Native American basketry, riding sidesaddle, early explorers, and Native American beadwork. A display on 1840s cooking included a piece of the Whitmans' cast iron stove. All of the displays included items not normally available for view by the public. Over 20,000 visitors saw the temporary exhibits last summer.

Exhibit Booth at Walla Walla County Fair

For the last several years, Whitman Mission and the Walla Walla Ranger District of the Umatilla National Forest have worked together to create an exhibit at the Walla Walla County Fair. In 2005, the booth covered life on the Oregon Trail, habitat restoration in the Umatilla National Forest, and recent forest fires in the area. Over 5000 visitors saw these exhibits. Whitman Mission uses NWIA funds to pay the rental fee for the exhibit booth, create exhibits, and copy handouts for fair visitors.



U.S. ARMY CORPS OF ENGINEERS

BONNEVILLE LOCK AND DAM

60th Anniversary of Woody Guthrie's Employment

Bonneville Lock and Dam celebrated the 60th anniversary of Woody Guthrie's employment by the Federal Government in May 2005. NWIA funded a temporary display from the Woody Guthrie Foundation. They also sponsored a musical performance by The Wanderers (also known as Carl Allen and Bill Murlin), who performed Woody Guthrie songs to a full theater at Bonneville Lock and Dam.

Store Layout in the Bradford Island Visitor Center

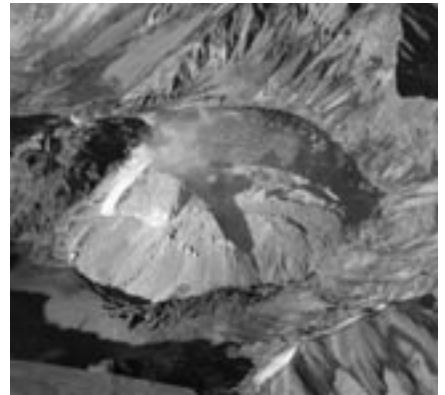
Thanks to assistance from NWIA, Bonneville was able to redesign the layout of the store in the Bradford Island Visitor Center. The new layout is more open and allows better circulation of visitors through the store's space.

Repair of Communication Devices

NWIA supported a repair for radio communication devices used in the interpretive work at Bonneville Dam. Three batteries were purchased for transmitter units so that employees could speak to the public inside the powerhouse.

Staffing of Booth for Lewis and Clark Event

NWIA funded the staffing of a booth for a Lewis and Clark event at Bonneville in April 2005. The booth featured information and exhibits on the Native Americans along the Lewis and Clark Trail 200 years ago and today. Stephanie Honanie Wendt, the Tourism and Outreach Coordinator for the Yakama Nation, staffed the booth and provided one-on-one interaction with visitors.



HIRAM M. CHITTENDEN LOCKS

“A Taste of Lewis & Clark in the Northwest” at the Ballard Locks

NWIA participated in the planning and implementation of “A Taste of Lewis & Clark in the Northwest”, an event that took visitors back to the expedition period of 1803-1806 featuring an authentic encampment by living history interpreters portraying members of the Lewis and Clark expedition. NWIA provided substantial funding for this 3-day event including paying for speakers, a reception, toilet facilities, and other support.

The Great Blue Heron

NWIA funded the creation of a fiberglass-embedded panel displaying interpretive information on the great blue heron. The panel features information on heron habitat and conservation providing the public with interesting and informative facts on these extraordinary animals.

CITY OF SEATTLE

CEDAR RIVER WATERSHED EDUCATION CENTER

New Front Desk Staff

NWIA provided support to hire a part-time front desk store manager at the Cedar River Watershed Education Center. Visitors to the education center ask about hiking, water supply, wildlife, and the history of the area, as well as signing up for classes and facility rentals. Approximately 10,000 visitors stopped at the front desk in 2005. Having additional front desk staffing enabled the education center to extend its summer hours (open 6 days a week) and to offer additional classes and tours.



MOUNT ST. HELENS ERUPTS AGAIN

Eruptive activity at Mount St. Helens captured the world's attention in 1980 when the largest historical landslide on Earth and a powerful explosion reshaped the volcano, created its distinctive crater, and dramatically modified the surrounding landscape. Over the next 6 years, episodic extrusions of lava built a large dome in the crater. From 1987 to 2004, Mount St. Helens returned to a period of relative quiet. During this period a new glacier grew in the crater and wrapped around and partly buried the lava dome.

Mount St. Helens volcano recaptured the world's attention when it showed signs of reawakening in September 2004. By September 24 many hundreds of earthquakes had occurred. Earthquake rates peaked that day at about 2 to 3 per minute then gradually declined, and it appeared that the swarm was ending. The release of energy by earthquakes increased dramatically during the next several days, and by October 1 earthquakes occurred nearly continuously. Parts of the glacier south of the lava dome rose and cracked noticeably, creating a broad welt. The accelerated size and frequency of earthquakes and noticeable deformation of the glacier indicated that molten rock (magma) was rising toward the surface.

On October 1, an explosion lofted steam and ash several thousand feet above a vent blasted through the fractured glacier, and hurled rock fragments at least 1/2 mile across the western half of the glacier and earlier lava dome. The size and frequency of earthquakes dropped following the first four explosions, but in each case built back within hours to pre-explosion levels. The level of earthquake activity dropped a final time after the largest explosion on October 5. From October 5 through March 2005, earthquake rates and sizes waxed and waned but never regained the peak levels of September 29 through October 5.

Following the brief series of steam-and-ash explosions, the volcano settled into a quieter phase during which the welt continued to grow and a new lava dome appeared. Growth of the welt along with detection of volcanic gases in early October provided clear evidence



TILTMETER STATION ON THE 1986 "SEPTEMBER LOBE" WITH MOUNT RAINIER VISIBLE IN THE BACKGROUND. PHOTO COURTESY USGS CASCADES VOLCANO OBSERVATORY.

that magma had risen to or close to the level of the 1980 crater floor. On October 11, a spine of solid, but still hot, lava punctured the surface of the welt. As this initial spine grew upward, several smaller spines appeared nearby. In late October, a larger whaleback-shaped extrusion of solid lava emerged immediately southeast of the initial spine. The early spines plus the whaleback extrusion are referred to as the new lava dome.

By early February 2005, the welt and new lava dome grew to a combined volume of about 50 million cubic yards, almost one-half the volume of the 1980-1986 lava dome. By then, the top of the new lava dome reached nearly 1,400 feet (taller than the Empire State Building) above the level of the 1980 crater floor, and the welt and new lava dome together covered an area equivalent to about 60 city blocks. Unlike lava domes at many other volcanoes, which form when lava accumulates and slowly flows over and around a volcanic vent, the new dome at Mount St. Helens has extruded as a solid mass, much like a piston being pushed from the ground. The new lava dome extruded from the ground rapidly. Global Positioning System (GPS) stations slung into place on top of the dome by helicopter showed that in November 2004 a point on the whaleback moved southward as much as 35 feet per day. In January 2005 the rate of movement had slowed slightly to about 30 feet per day, and by mid- February 2005, motion had slowed to about 20 feet per day.

— TEXT EXCERPTED FROM **MOUNT ST. HELENS ERUPTS AGAIN: ACTIVITY FROM SEPTEMBER 2004 AND MARCH 2005, U.S. GEOLOGICAL SURVEY FACT SHEET FS2005-3036** — MAJOR, J.J., SCOTT, W.E., DREIDGER, C., AND DZURISIN, D., 2005. THE ENTIRE TEXT CAN BE READ IN FULL AT THE USGS CVO WEB SITE AT: [HTTP://VULCAN.WR.USGS.GOV/VOLCANOES/MSE/](http://vulcan.wr.usgs.gov/volcanoes/msh/)

STATEMENT OF FINANCIAL POSITION

DECEMBER 31, 2005 & 2004

AID TO AGENCIES FROM INCEPTION THROUGH DECEMBER 31, 2005 & 2004

	ACCUMULATED TO DEC. 31, 2004	CURRENT	ACCUMULATED TO DEC. 31, 2005
Administrative Aid to Agency Managers	\$ 122,140	\$ 3,390	\$ 125,530
Environmental Education	33,727	2,691	36,418
Equipment Donations	153,115	7,182	160,297
Publications & Program Aid	1,074,642	45,470	1,120,112
Interpretive Programs	1,042,925	53,062	1,095,987
Land Donations	1,159	-	1,159
Library Activities	95,544	1,962	97,506
Memberships & Subscriptions	38,293	905	39,198
Museum Activities	71,021	1,271	72,292
Other Aid	805,462	68,873	874,335
Special Projects	962,708	-	962,708
Research Activities	16,187	752	16,939
Website	1,597	4,818	6,415
Information & Sales Staffing	7,622,295	658,848	8,281,143
 TOTAL AID TO AGENCIES	 \$12,040,815	 \$ 849,224	 \$12,890,039

SALES AND OTHER REVENUES

	2005	2004	2003	2002	2001
Sales	\$ 3,080,201	\$ 2,919,598	\$ 2,897,137	\$ 3,025,255	\$ 2,921,628
Other Revenues	183,218	232,202	184,742	213,941	246,978
TOTAL SALES AND OTHER REVENUES	\$ 3,263,419	\$ 3,151,800	\$ 3,081,879	\$ 3,239,196	\$ 3,168,606

ASSETS	2005	2004
CURRENT ASSETS		
Cash & Cash Equivalents - Unrestricted	\$ 716,870	\$1,053,426
Restricted	120,975	157,250
	837,845	1,210,676
Accounts Receivable	9,004	2,806
Salaries Receivable	18,245	-
Inventory - Merchandise, net of reserve for obsolete inventory of \$11,000 in 2005 & 2004	701,586	747,086
Inventory - Passes	374,890	118,241
Prepaid Expenses	7,316	24,384
Total Current Assets	1,948,886	2,103,373
Property and Equipment	73,822	75,224
 TOTAL ASSETS	 \$ 2,022,708	 \$ 2,178,597
 LIABILITIES AND NET ASSETS		
	2005	2004
CURRENT LIABILITIES		
Accounts Payable	\$ 186,145	\$ 359,322
Accrued Vacation	42,044	31,666
Accrued Wages and Taxes	21,745	16,418
Other Accrued Liabilities	41,562	7,497
Retirement Plan Contribution Payable	847	880
Total Current Liabilities	292,343	415,783
 NET ASSETS		
Unrestricted	1,609,390	1,605,564
Temporarily Restricted	120,975	157,250
Total Net Assets	1,730,365	1,762,814
 TOTAL LIABILITIES AND NET ASSETS	 \$2,022,708	 \$2,178,597

NWIA PARTNERS AND CONTACT INFORMATION

USDA FOREST SERVICE

Clearwater National Forest

Forest Supervisor: Thomas K. Reilly
Coordinator: Kathy Thompson
12730 Hwy. 12
Orofino, ID 83544
<http://www.fs.fed.us/r1/clearwater/>

Columbia River Gorge National Scenic Area

Area Manager: Daniel Harkenrider
Coordinator: Beth Kirschhofer
902 Wasco Ave, Suite 200
Hood River, OR 97031
<http://www.fs.fed.us/r6/columbia/forest/>

Colville National Forest

Forest Supervisor: Rick Brazell
Coordinator: Laura Stites
315 N. Warren Ave.
Newport, WA 99156
<http://www.fs.fed.us/r6/colville/>

Deschutes National Forest

Forest Supervisor: Leslie Weldon
Coordinator: Robin Gyorgyfalvy
1645 Hwy. 20 E.
Bend, OR 97701
<http://www.fs.fed.us/r6/centraloregon/>

Gifford Pinchot National Forest

Forest Supervisor: Claire Lavendel
Coordinator: Tom Knappenberger
10600 NE 51st Circle
Vancouver, WA 98682
<http://www.fs.fed.us/gpnf/>

Lassen National Forest

Forest Supervisor: Laurie A. Tippin
Coordinator: Tami Taylor
43225 E. Hwy 299
PO Box 220
Fall River Mills, CA 96028
<http://www.fs.fed.us/r5/lassen/>

Lewis & Clark National Forest

Forest Supervisor: Spike Thompson
Coordinator: Bonnie Dearing
PO Box 869, 1101 15th St. N.
Great Falls, MT 59405
<http://www.fs.fed.us/r1/lewisclark/>

Lolo National Forest

Forest Supervisor: Deborah Austin
Fort Missoula, Bldg. 24A
Missoula, MT 59804
<http://www.fs.fed.us/r1/lolo/>

Malheur National Forest

Forest Supervisor: Roger W. Williams
Coordinator: Sharon Sweeney
PO Box 909, 431 Patterson Bridge Rd.
John Day, OR 97845
<http://www.fs.fed.us/r6/malheur/>

Mt. Hood National Forest

Forest Supervisor: Gary Larsen
Coordinator: Malcolm Hamilton
Mt. Hood NF Headquarters
16400 Champion Way
Sandy, OR 97055
<http://www.fs.fed.us/r6/mthood/>

Mt. Baker-Snoqualmie National Forest

Acting Forest Supervisor: Dale Hom
Coordinator: Cindy White
21905 64th Ave. W.
Mountlake Terrace, WA 98037
<http://www.fs.fed.us/r6/mbs/>

Ochoco National Forest

Forest Supervisor: Jeff Walter
Coordinator: Virginia Gibbons
PO Box 490, 3160 N.E. 3rd Street
Prineville, OR 97754
<http://www.fs.fed.us/r6/centraloregon/>

Okanogon and Wenatchee National Forests

Forest Supervisor: James Boynton
Coordinator: Bette Cooney
215 Melody Lane
Wenatchee, WA 98801
<http://www.fs.fed.us/r6/okanogon/>
<http://www.fs.fed.us/r6/wenatchee/>

Olympic National Forest

Forest Supervisor: Dale Hom
Coordinator: Deborah Black
1835 Black Lake Blvd. SW
Olympia, WA 98512-5623
<http://www.fs.fed.us/r6/olympic/>

Shasta-Trinity National Forest

Forest Supervisor: Sharon Heywood
Coordinator: Brenda Tracy
3644 Avtech Parkway
Redding, CA 96002
<http://www.fs.fed.us/r5/shastatrinity/>

Siskiyou National Forest

Forest Supervisor: Scott Conroy
Coordinator: Teresa Miller
29279 Ellensburg Avenue
Gold Beach, OR 97444
<http://www.fs.fed.us/r6/siskiyou/>

Siuslaw National Forest

Forest Supervisor: Jose Linares
Coordinator: Carole Wendler
4077 SW Research Way
Corvallis, OR 97339
<http://www.fs.fed.us/r6/siuslaw/>

Umpqua National Forest

Forest Supervisor: James Caplan
Coordinator: Cheryl Walters
PO Box 1008, 2900 NE Stewart Pkwy.
Roseburg, OR 97470
<http://www.fs.fed.us/r6/umpqua/>

Wallowa-Whitman National Forest

Forest Supervisor: Steve Ellis
Coordinator: Nancy Ruder
88401 Hwy. 82
Enterprise, OR 97828
<http://www.fs.fed.us/r6/w-w/>

Willamette National Forest

Forest Supervisor: Dallas Emch
Coordinator: Katherine Harbick
PO Box 10607, 211 E. 7th Ave.
Eugene, OR 97440
<http://www.fs.fed.us/r6/willamette/>

NATIONAL PARK SERVICE**Fort Vancouver National Historic Site**

Park Superintendent: Tracy Fortmann
Coordinator: Greg Shine
612 E. Reserve St.
Vancouver, WA 98661
<http://www.nps.gov/fova/>

John Day Fossil Beds National Monument

Park Superintendent: Jim Hammett
Coordinator: John Fiedor
32651 Highway 19
Kimberly, OR 97848-9701
<http://www.nps.gov/joda/>

**Klondike Gold Rush National
Historical Park**

Park Superintendent: Debbie Conway
Coordinator: Sean O'Meara
319 Second Ave. South
Seattle, WA 98104
<http://www.nps.gov/klse/>

Lake Roosevelt National Recreation Area

Park Superintendent: Debbie Bird
Coordinator: Lynne Brougher
1008 Crest Dr.
Coulee Dam, WA 99116
<http://www.nps.gov/laro/>

Mount Rainier National Park

Park Superintendent: David Uberuaga
Coordinator: Lee Taylor
Star Route, Tahoma Woods
Ashford, WA 98304
<http://www.nps.gov/mora/>

Nez Perce National Historical Park

Park Superintendent: Gary Somers
Coordinator: Marie Marek
39063 U.S. Hwy. 95
Spalding, ID 83540
<http://www.nps.gov/nepe/>

North Cascades National Park Complex

Park Superintendent: William Paleck
810 State Route 20
Sedro Woolley, WA 98284-9394
<http://www.nps.gov/noca/>

Olympic National Park

Park Superintendent: Bill Laitner
Coordinator: Kathy Steichen
3002 Mount Angeles Rd.
Port Angeles, WA 98362
<http://www.nps.gov/olym/>

San Juan Island National Historical Park

Park Superintendent: Peter Dederich
PO Box 429, 125 Spring St.
Friday Harbor, WA 98250
<http://www.nps.gov/sajh/>

Whitman Mission National Historic Site

Park Superintendent: Terry Darby
Coordinator: Roger Trick
328 Whitman Mission Road
Walla Walla, WA 99362
<http://www.nps.gov/whmi/>

ARMY CORPS OF ENGINEERS**Bonneville Lock and Dam**

Operations Manager: James Mahar
Coordinator: Patrick Barry
U.S. Army Corps of Engineers
Cascade Locks, OR 97014
<https://www.nwp.usace.army.mil/op/b/>

Hiram M. Chittenden Locks

District Coordinator: Colonel Debra M. Lewis
Coordinator: Dru Butterfield
3015 NW 54th St.
Seattle, WA 98107
<http://www.nws.usace.army.mil/PublicMenu/Menu.cfm?sitename=lwsc&pagename=mainpage>

BUREAU OF LAND MANAGEMENT**Fort Benton Visitor Center**

Supervisor: David Mari
Coordinator: Connie Jacobs
PO Box 1389, 1402 Front St, C
Fort Benton, MT 59442
<http://www.mt.blm.gov/ldo/um/docs/ftbenton.htm>

CITY OF SEATTLE**Cedar River Watershed Education Center**

Coordinator: Ralph Naess
19901 Cedar Falls Rd. SE
North Bend, WA 98045
http://www.seattle.gov/util/About_SPU/Water_System/Water_Sources_&_Treatment/Cedar_River_Education_Center/index.asp

WASHINGTON STATE PARKS**Mount St. Helens Visitor Center**

Coordinator: Pam Wilkins-Ripp
3029 Spirit Lake Hwy.
Castle Rock, WA 98611
<http://www.parks.wa.gov/mountsthelens.asp>

MUSEUM OF HISTORY AND INDUSTRY

Executive Director: Leonard Garfield
Coordinator: Feliks Banel
2700 24th Avenue East
Seattle, WA 98112-2099
<http://www.seattlehistory.org/>



NWIA SALES AREA LOCATIONS

CALIFORNIA

Lassen National Forest
 Shasta-Trinity National Forest

IDAHO

Clearwater National Forest
 Nez Perce National Historical Park
 Lolo Pass Visitor Center

MONTANA

Fort Benton Visitor Center
 Lewis and Clark National Forest
 Lolo National Forest

OREGON

Bonneville Lock and Dam
 Columbia River Gorge National Scenic Area
 Deschutes National Forest
 John Day Fossil Beds National Monument
 Malheur National Forest
 Mt. Hood National Forest
 Ochoco National Forest
 Siskiyou National Forest

Siuslaw National Forest

Umpqua National Forest
 Wallowa-Whitman National Forest
 Willamette National Forest

WASHINGTON

Cedar River Watershed Education Center
 Colville National Forest
 Fort Vancouver National Historic Site
 Gifford Pinchot National Forest
 Hiram M. Chittenden Locks
 Klondike Gold Rush National Historical Park
 Lake Roosevelt National Recreation Area
 Mt. Baker-Snoqualmie National Forest
 Mount Rainier National Park
 Museum of History and Industry
 North Cascades National Park Service Complex
 Okanogan and Wenatchee National Forests
 Olympic National Forest
 Olympic National Park
 Outdoor Recreation Information Center
 San Juan Island National Historical Park
 Whitman Mission National Historic Site

COVER PHOTOGRAPH: DETAIL FROM PHOTOGRAPH OF MOUNT ST. HELENS CRATER AND DOME AS SEEN FROM JOHNSTON RIDGE OBSERVATORY (JRO) CAMERA STATION. USGS PHOTOGRAPH TAKEN ON JUNE 25, 2005, BY ELLIOT ENDO.