



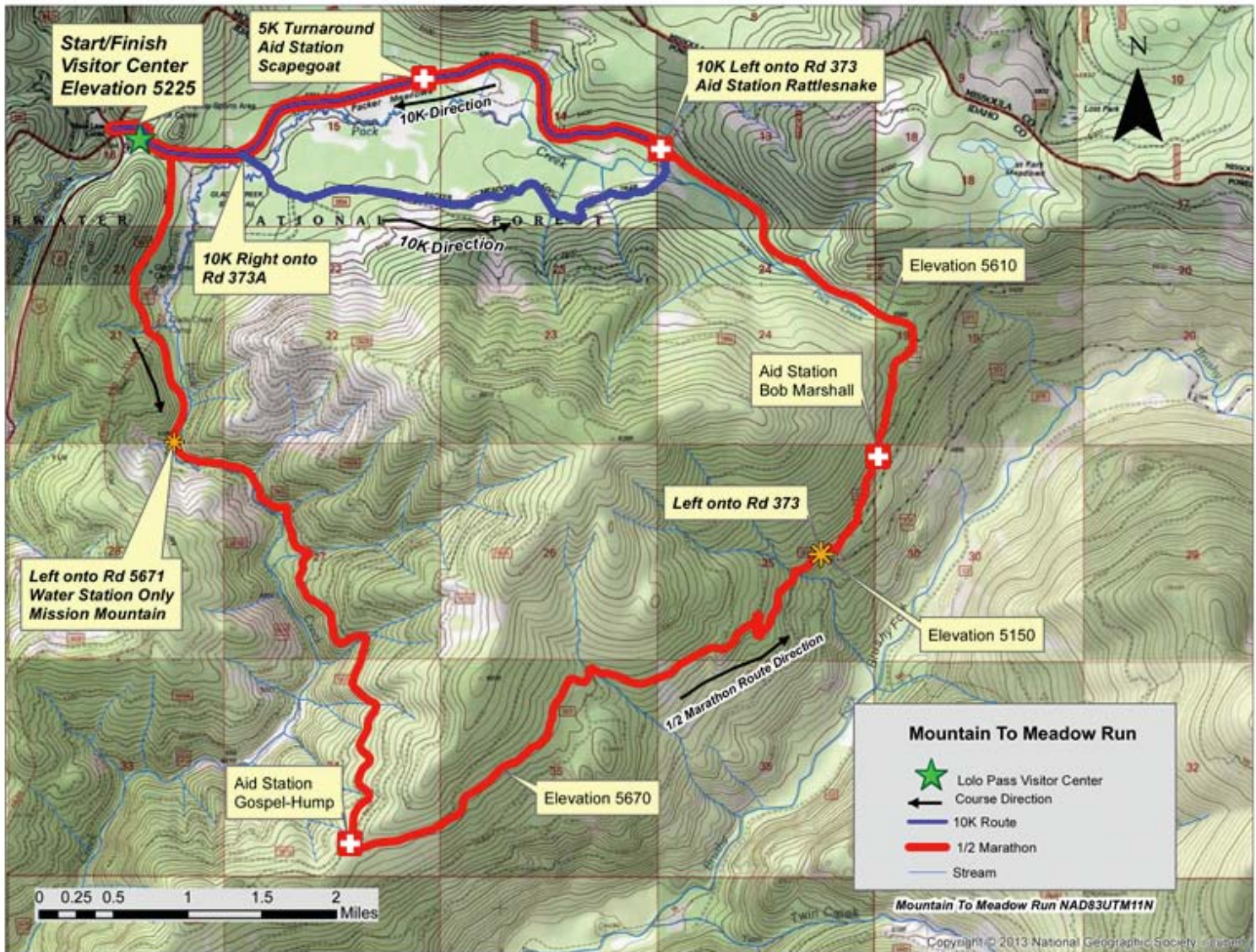
MOUNTAIN to MEADOW

Half Marathon, 5.8 Trail Run, and 5K Fun Run
 Lolo Pass Visitor Center • June 25, 2016

Fun Facts

- The Mountain-to-Meadow event starts at the Lolo Pass Visitor Center at an elevation of 5225 feet.
- Travelers Rest Brigade will perform re-enactments of Lewis and Clark history and start the race with a bang!
- The whole area is very scenic. You'll wind your way on a dirt and gravel course through forests of Engelmann spruce, subalpine fir, and meadows of eye-popping wildflowers.
- There will be interpretive programs at the visitor center on wolves before and during the race! Glow in the dark sticks will be available for all children who are participating and for all those runners/walkers who are young at heart.
- Children 12 and under can participate free of charge. Each child finishing the course will receive a small prize!
- Seniors 70 and over receive a \$7.00 discount off their registration.
- Leashed dogs can run with their families.
- The historic Nez Perce and Lewis and Clark Trail runs through the area. See interpretive trail signs to learn more.
- Proceeds of this event will be used to help visitors discover and appreciate the history and beauty of the public lands around the Lolo Pass Visitor Center.

Course Map



Organized by Discover Your Northwest, a 501(c)(3) nonprofit.